

# **Apollo for Eclipse**

## **Installation Guide**

---

# **Apollo for Eclipse: Installation Guide**

Copyright © 2007 Gentleware AG

---

---

---

## Table of Contents

|   |    |
|---|----|
| 1. About Gentleware and Apollo for Eclipse .....                | 1  |
| About Gentleware and Apollo for Eclipse .....                   | 1  |
| Contact .....   | 1  |
| Features in Version 3.x .....                                   | 2  |
| About This Document .....                                       | 2  |
| 2. Installation and First Start .....                           | 3  |
| Prerequisites .....   | 3  |
| Installing the Rich Client Platform .....                       | 3  |
| Installing as an Eclipse Extension .....                        | 3  |
| Install Eclipse Components through Update Services .....        | 3  |
| Eclipse Europa .....  | 6  |
| Install Eclipse Components Manually .....                       | 11 |
| Troubleshooting .....   | 12 |
| 3. Keys and Registration .....                                  | 17 |
| Types and Terminology .....                                     | 17 |
| License Manager .....   | 17 |
| License Manager Help .....                                      | 18 |
| Licensing Apollo for Eclipse .....                              | 19 |
| A. Hypersonic SQL Group Database Engine License Agreement ..... | 23 |

---

## List of Tables

|   |    |
|---|----|
| 2.1. Minimum Eclipse features required for Apollo for Eclipse ..... | 11 |
|---|----|

---

# Chapter 1. About Gentleware and Apollo for Eclipse

## About Gentleware and Apollo for Eclipse

### Contact

We are always very happy to get feedback on our tools and services. If you want to contact us, there are several ways to get in touch.

#### **Email**

The easiest way to contact us is via the web form. We offer addresses for different purposes.

*General information, feature requests, or suggestions:*

<http://www.gentleware.com/contact.html>

*Customer support (for license holders\*):*

Please keep in mind that our customer support is available during our normal working hours - Monday through Friday, 9 am to 6 pm Central European Time. Consider checking the forums and the FAQ to answer your question first.

<http://www.gentleware.com/supportreq.html>

*Questions on purchase process, quotes, or volume sales:*

[sales@gentleware.com](mailto:sales@gentleware.com) [<mailto:sales@gentleware.com>]

\* Unlicensed edition users are encouraged to use our forum for support questions.

<http://www.gentleware.com/fileadmin/forum.html>

#### **Web Site**

For general discussion we have installed an open forum [<http://www.gentleware.com/fileadmin/forum.html>] in which users of Apollo for Eclipse can freely discuss topics related to our tools. Typically these are questions on how to do something, discussions on what other features would be nice, or comments on what people like or dislike about our tool. Our staff is actively taking part in these discussions, but you might also get a response from other users.

To order our products you can use the online shop [<http://www.gentleware.com/shop0.html>], which requires a credit card. If you do not have a credit card or you hesitate to use it over the web, send us an email at [sales@gentleware.com](mailto:sales@gentleware.com) [<mailto:sales@gentleware.com>].

#### **Phone**

Our preferred payment method is credit card. However, if you do not have a credit card or you hesitate to use it over the web, you can also send a fax, send email to [sales@gentleware.com](mailto:sales@gentleware.com) [<mailto:sales@gentleware.com>] or call us.

There is a fax order sheet provided on our web site. Begin the order process as usual, then select 'Order by Fax' at the bottom of the Checkout page. Our fax number is +49 40 2442 5331.

Please try to find an answer to your question on our web pages [<http://www.gentleware.com/support.html>] or the FAQ list [<http://www.gentleware.com/faq.html>].

### **Regular Mail**

To send us mail or to visit us in person, our address is:

Gentleware AG  
Ludwigstraße 12  
20357 Hamburg  
Germany

## **Features in Version 3.x**

Feature list includes:

- Forward, reverse, and roundtrip engineering
- Support for Java 5
- Support for UML 2.1
- Superior class diagram handling
- Available as a standalone RCP or as an extension to Eclipse
- GMF 2.0 and Eclipse 3.3
- Array dimension support for attributes
- Configurable location of model files

## **About This Document**

This document describes Apollo for Eclipse and how to use it. It is intended as a user guide. It is not a book about UML, Java, or Eclipse. Basic knowledge about UML, Java, and Eclipse is assumed.

We are working hard to make Apollo for Eclipse as intuitive as possible. You should be able to open up Apollo for Eclipse and start using it without looking into this documentation. However, you will find it useful to read through this document to get you up to speed faster and discover useful features earlier.

---

# Chapter 2. Installation and First Start

## Prerequisites

Apollo for Eclipse is platform-independent. It runs on almost any modern personal computer. To successfully start and run Apollo for Eclipse, you need the following:

- J2SE 5.0 Java Runtime Environment
- A computer with reasonable memory and CPU power. For memory, 512 MB is recommended, more is helpful. For CPU, a Pentium III or equivalent is the recommended minimum.

## Installing the Rich Client Platform

The easiest way to get started with Apollo for Eclipse is to use the Rich Client Platform (RCP). Download the RCP zip file (e.g. for Windows: [Apollo\\_RCP\\_3.0.0\\_win32.win32.x86.zip](#)) from the Genteware web site, unpack the file to the desired directory, and run Apollo for UML from this directory.



## Installing as an Eclipse Extension

Apollo for Eclipse may also be added as an extension to the Eclipse IDE. It requires some features to be installed to Eclipse in addition to the Apollo for Eclipse extension. The simplest way to do this is using Eclipse Europa, although you may also choose to install each part manually.

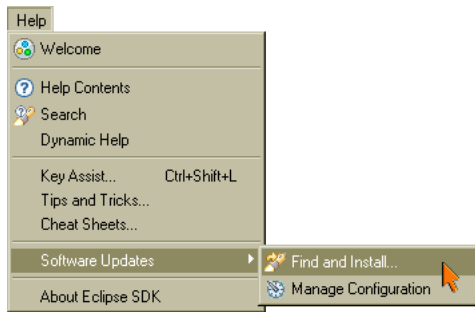
Additionally, you will need to consult the Eclipse documentation for the prerequisites that match your usage scenario and computer setup. The exact list of requirements for running Apollo for Eclipse as an extension can be found later in the section the section called “Install Eclipse Components Manually”.

## Install Eclipse Components through Update Services

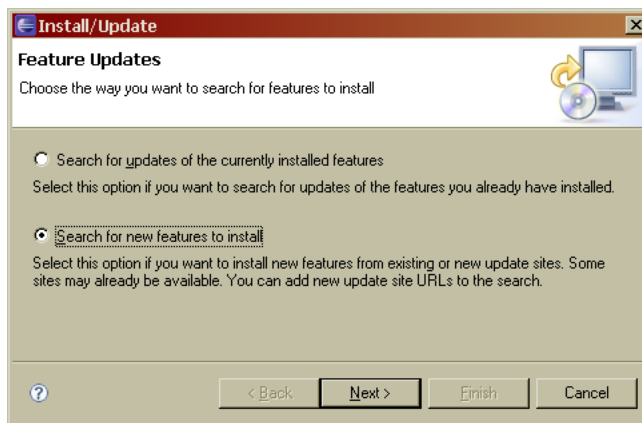
This is the standard Eclipse way of installing features, and is also an easy way to complete the installation. Genteware recommends using this method of installation.

1. If it is not already installed, install the Eclipse SDK 3.3.x (the current version as of the publication of this document is 3.3.0).

2. Start Eclipse. From the Help menu, select **Software Updates -> Find and Install...**

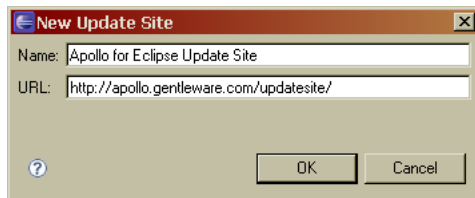


3. Select '**Search for new features to install**' and click '**Next**'.



4. If it does not appear already, add the Apollo for Eclipse Update Site as a New Remote Site:

-> New Remote Site  
-> Name = "Apollo for Eclipse Update Site"  
-> URL = "http://apollo.gentleware.com/updatesite/"



5. There are 5 different versions of Eclipse 3.3 Europa: *Eclipse IDE for Java Developers*, *Eclipse IDE for Java EE Developers*, *Eclipse IDE for C/C++ Developers*, *Eclipse for RCP/Plug-in Developers*, and *Eclipse Classic*.

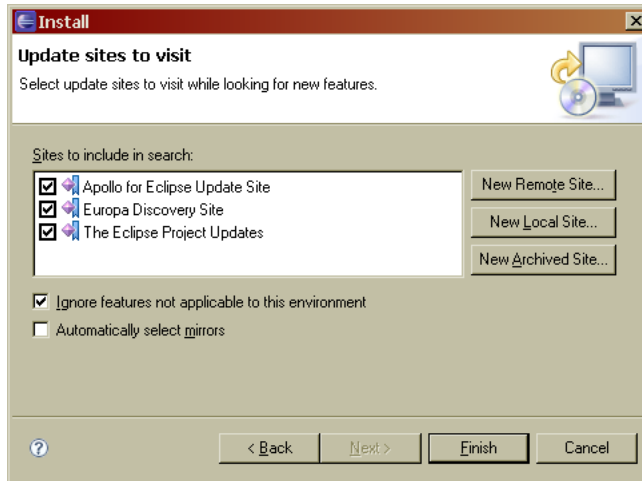
If you are using the *RCP/Plug-in Developers* or *Eclipse Classic*, select "**Apollo for Eclipse Update Site**" and "**Europa Discovery Site**".

If you are using one of the *IDE versions*, you must also install the `org.eclipse.sdk` feature via The Eclipse Project Update. Check "**The Eclipse Project Update**" in addition to "**Apollo for Eclipse Update Site**" and "**Europa Discovery Site**".

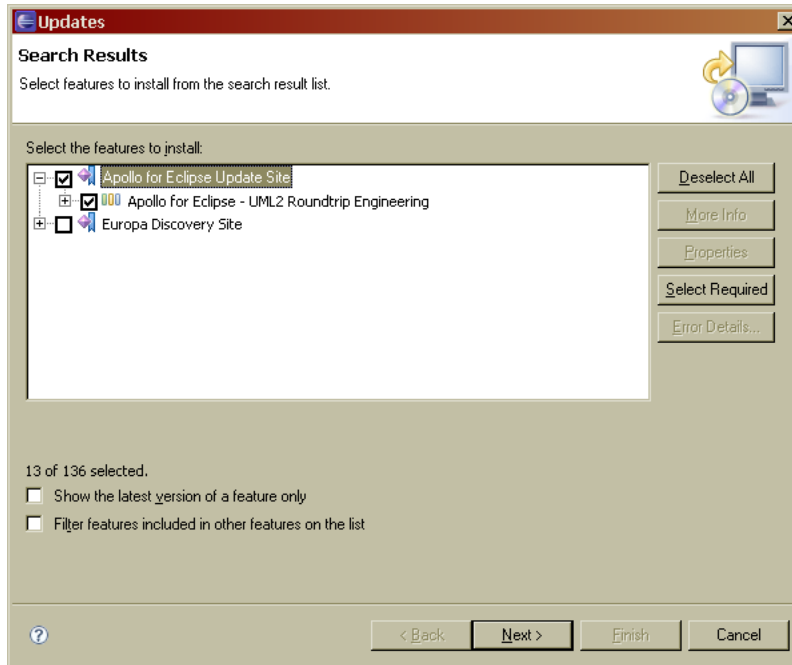
Check the remote site, check "**Ignore features not applicable for this environment**", and uncheck "**Automatically select mirrors**". Click "**Finish**".

## Note

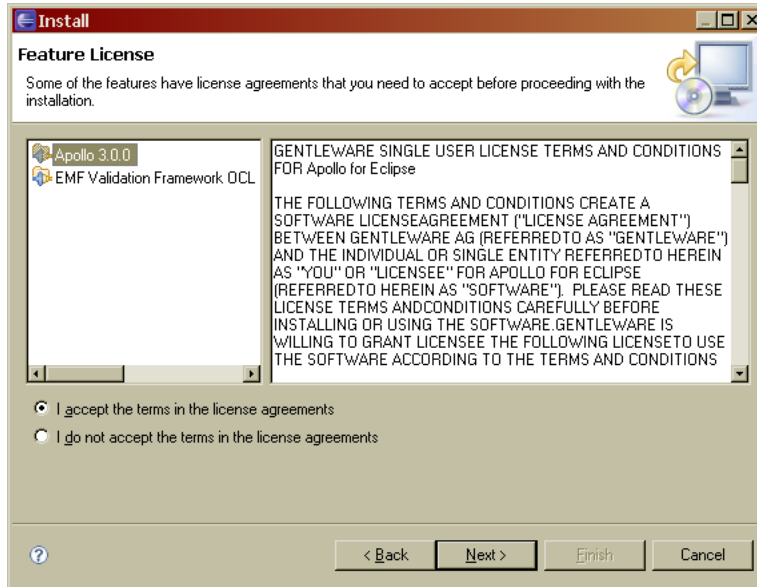
Some of the mirrors for Eclipse plug-ins don't offer the same content as the original update site. Please be sure to use the original site: <http://apollo.gentleware.com/updatesite/>



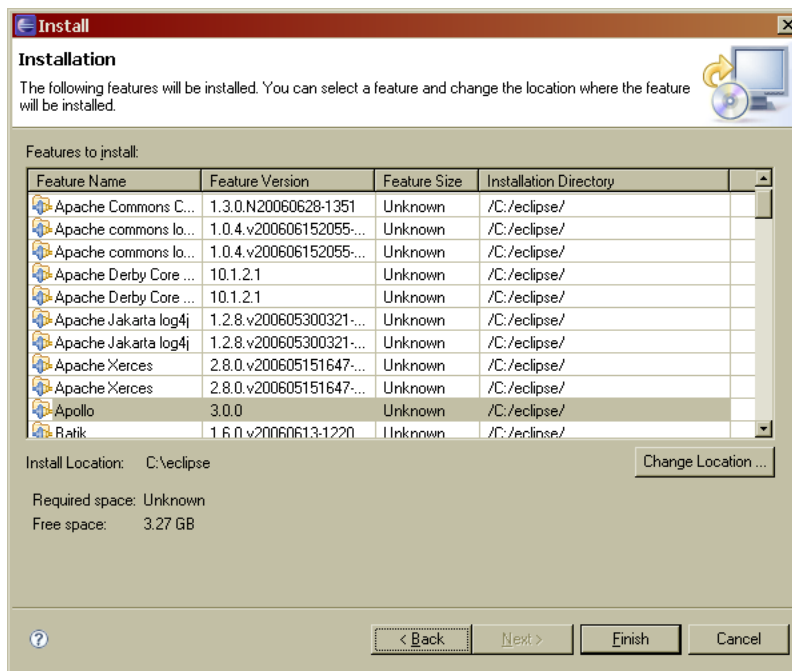
- Open **Apollo for Eclipse Update Site** -> **Apollo for Eclipse** -> **Apollo 3.0**.



- Click **"Select Required"**, then click **"Next"**.
- Carefully read the license texts, then accept the licenses. Click **"Next"**.



9. Check Locations and click "Finish".



## Eclipse Europa

There are three main steps to install Apollo for Eclipse. First an update is made through Europa, then the UML2 Eclipse project is installed, and finally Apollo for Eclipse is installed. The method described here works, but will install many more features than are required by Apollo for Eclipse and take up much more disk space than using the method described in the section called “Install Eclipse Components through Update Services”.

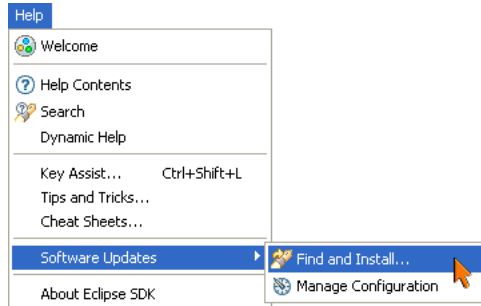
### 1. Europa Installation

- a. If it is not already installed, begin by installing Eclipse SDK version 3.3 or higher. The download is available from 'Eclipse downloads home [<http://www.eclipse.org/downloads/>]' on the Eclipse website. Simply download the zip file and extract them to a directory on your system.

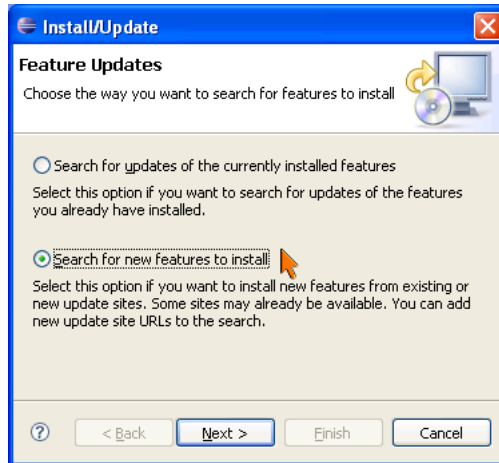
## Note

On Windows systems, it is not recommended to extract the files to the 'Program Files' directory. The white space in the file name may cause problems with some extensions or compilers.

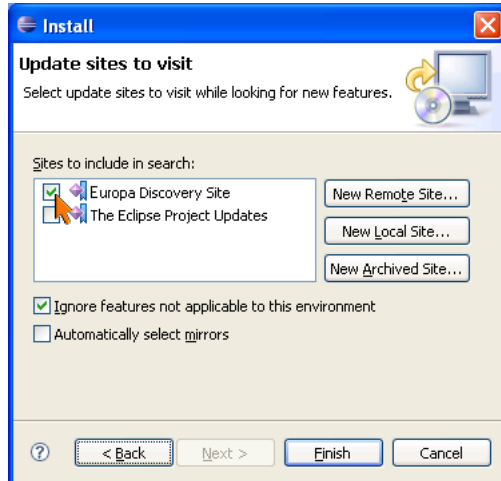
- b. Start Eclipse. From the Help menu, select Software Updates -> Find and Install...



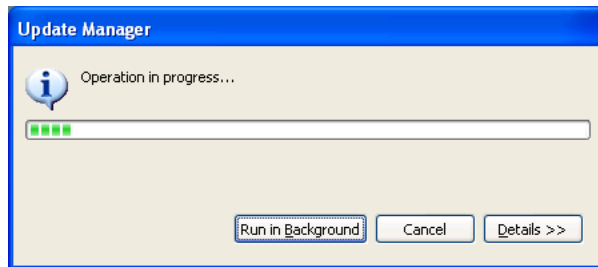
- c. Select '**Search for new features to install**' and click '**Next**'.



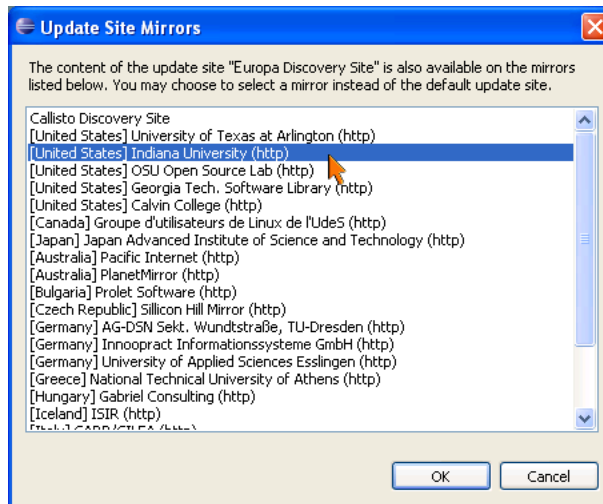
- d. Select the '**Europa Discovery Site**' and click '**Finish**'.



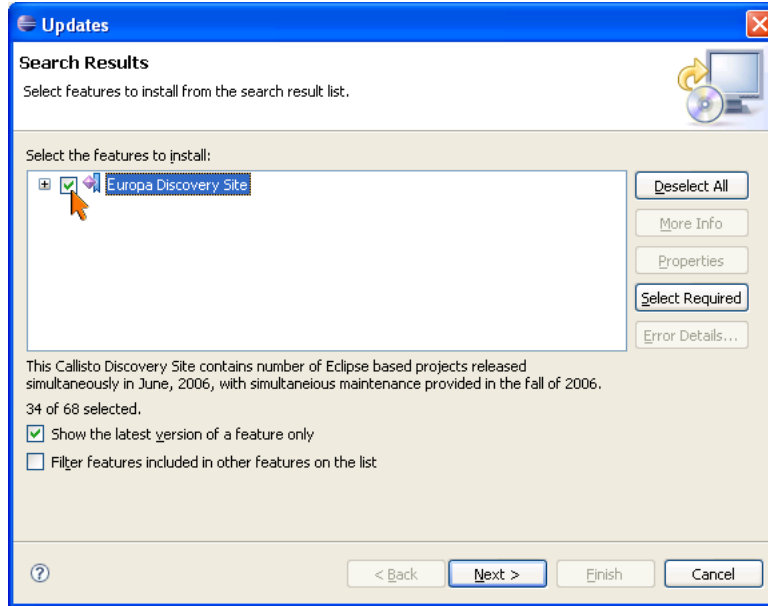
e. The Update Manager will search for a list of mirror sites.



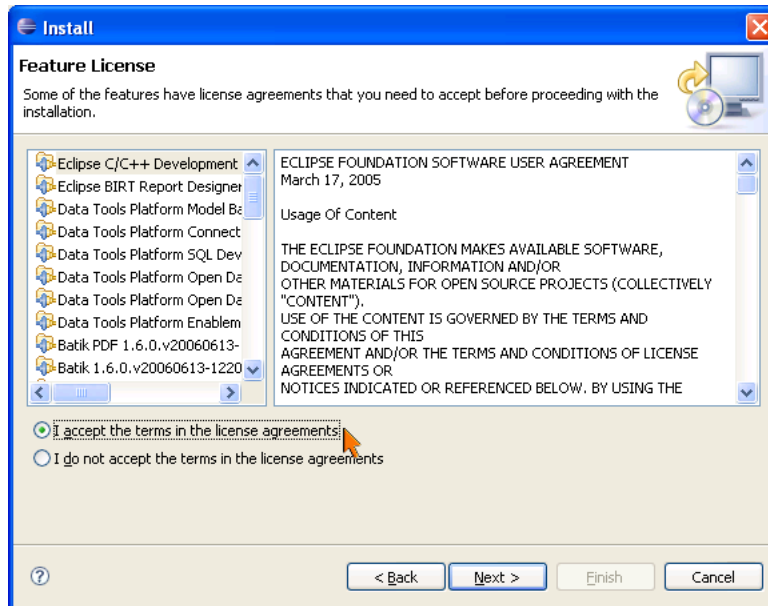
Select the mirror nearest you and click 'OK'.



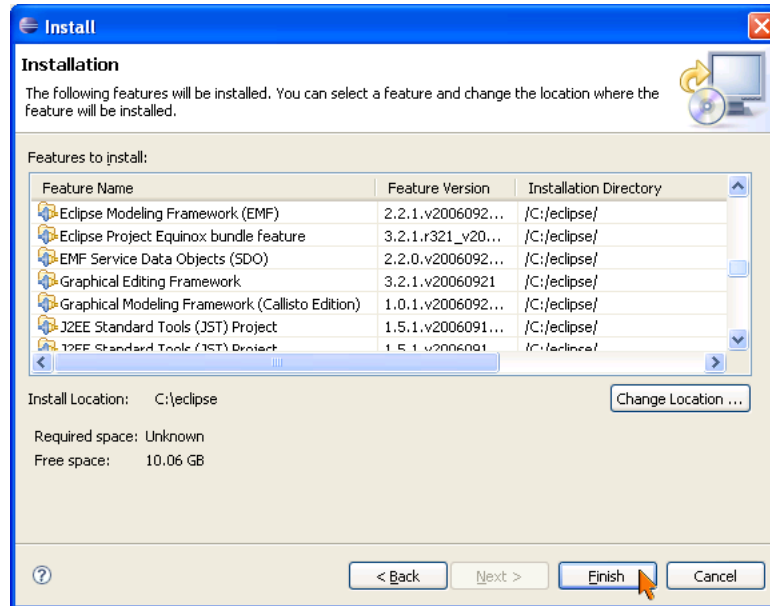
f. Select the 'Europa Discovery Site' and click 'Next'.



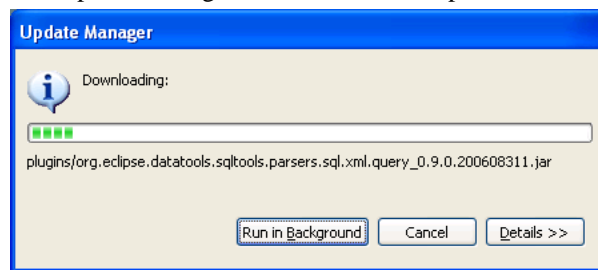
g. Accept the license agreements and click 'Next'.



h. Click 'Finish' to install the components.



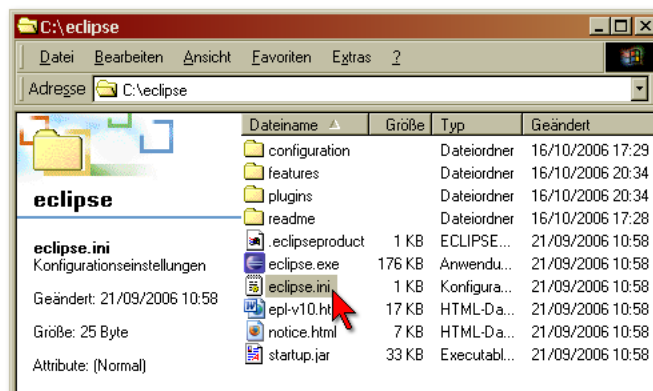
The Update Manager will install the components.




Shut down Eclipse after the installation is complete.

- i. In the Eclipse installation folder, create the file `eclipse.ini` if it does not exist. Add or edit the following in `eclipse.ini`:


```
-vmargs
-Xms64m
-Xmx512m
-XX:MaxPermSize=128m
```



**2. Install the UML2 Project**

- a. Download the UML2 project  `uml2-SDK-2.1.0.zip` from the Eclipse site [<http://www.eclipse.org/uml2/>].
- b. Extract the zip file to the Eclipse installation.

**3. Install Apollo for Eclipse**

- a. Download Apollo for Eclipse  `Apollo_3.0.0.zip` from the Genteware website [<http://www.genteware.com/downloadcenter.0.html>].
- b. Extract the zip file to the Eclipse installation.



**4. Start Eclipse.**

## Install Eclipse Components Manually

The third and least recommended option for installing Apollo for Eclipse is to install the required features manually. The table below lists the necessary features:

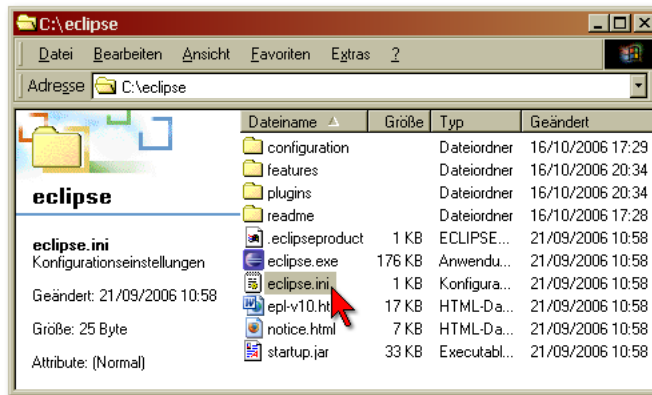
**Table 2.1. Minimum Eclipse features required for Apollo for Eclipse**

| Feature                            | Version Number              |
|------------------------------------|-----------------------------|
| eclipse-SDK                        | 3.3                         |
| EMF Service Data Objects (SDO) SDK | 2.3                         |
| OCL SDK                            | 1.1.0                       |
| EMF Model Query SDK                | 1.1.0                       |
| EMF Model Transaction SDK          | 1.1.0                       |
| EMF Validation Framework SDK       | 1.1.0                       |
| Graphical Editing Framework SDK    | 3.3.0                       |
| Graphical Modeling Framework SDK   | 2.0.0                       |
| Apache Batik                       | 1.6.0 (included in GMF-SDK) |
| UML2 SDK                           | 2.1.0                       |

1. Install all of the Eclipse features listed above.
2. Download the UML2 project  `uml2-SDK-2.1.0.zip` from the Eclipse site [<http://www.eclipse.org/uml2/>].
3. Extract the zip file to the Eclipse installation.
4. Download Apollo for Eclipse  `Apollo_3.0.0.zip` from the Genteware website [<http://www.genteware.com/downloadcenter.0.html>].
5. Extract the zip file to the Eclipse installation.
6. Start Apollo for Eclipse.
7. In the Eclipse installation folder, create the file `eclipse.ini` if it does not exist. Add or edit the following in `eclipse.ini`:

```
-vmargs
```

- Xms64m
- Xmx512m
- XX:MaxPermSize=128m



## Troubleshooting

When running Linux GTK+ & GEF, some elements don't appear.

Linux GTK+ and GEF don't always work well together, depending on the versions used. If some elements are not appearing, disable anti-aliasing in the Apollo preferences (**Window->Preferences->Apollo**).

The following has been taken from the Eclipse Project Release Notes 3.2.1 [[http://www.eclipse.org/eclipse/development/readme\\_eclipse\\_3.2.1.html](http://www.eclipse.org/eclipse/development/readme_eclipse_3.2.1.html)].

Installation/Configuration issues that can cause Eclipse to fail start

Here are some common problems that can cause Eclipse not to start:

- Eclipse 3.2 requires at least a 1.4.2 VM. Perhaps an older version of the VM is being found in your path. To explicitly specify which VM to run with, use the Eclipse `-vm` command-line argument.
- Eclipse must be installed to a clean directory and not installed over top of a previous installation. If you have done this then please re-install to a new directory. If your workspace is in a child directory of your old installation directory, then see the instructions on "Upgrading Workspace from a Previous Release [[http://www.eclipse.org/eclipse/development/readme\\_eclipse\\_3.2.1.html#upgrading](http://www.eclipse.org/eclipse/development/readme_eclipse_3.2.1.html#upgrading)]".
- Java sometimes has difficulty detecting whether a file system is writable. In particular, the method `java.io.File.canWrite()` appears to return true in unexpected cases (e.g., using Windows drive sharing where the share is a read-only Samba drive). The Eclipse runtime generally needs a writable configuration area and as a result of this problem, may erroneously detect the current configuration location as writable. The net result is that Eclipse will fail to start and depending on the circumstances, may fail to write a log file with any details. To work around this, we suggest users experiencing this problem set their configuration area explicitly using the `-configuration` command line argument.

Installing plug-ins by unzipping them into the plugins directory

If you have installed new plug-ins and they aren't showing up when you run, then perhaps you unzipped them into your "plugins" directory

|   |   |
|---|---|
|   | and your configuration might need to be refreshed. This can be accomplished by starting Eclipse with the <b>-clean</b> command line argument.   |
| XML files with UTF-8 byte order mark fail to have content type detected                     | Eclipse will fail to detect the proper content type for XML files that have a UTF-8 byte order mark if Crimson is the XML parser (as it is on Sun 1.4 JREs, but not on Sun 1.5 JREs). This problem will prevent actions normally available when files of the affected content types are selected from being presented to the user. The workaround is to ensure the default XML parser supports UTF-8 BOMs (such as Xerces does).  |
| No branding with old config.ini   | If you have an old <code>config.ini</code> file and use it with a new Eclipse build, you may not get the correct product branding. This is because the id of the standard Eclipse product changed. Users in shared install scenarios may end up in this situation as previous builds of Eclipse automatically generated <code>config.ini</code> files in some cases. The work around is either to delete the local <code>config.ini</code> or update the <b>eclipse.product</b> line to read <b>eclipse.product=org.eclipse.platform.ide</b> .  |
| Invalid characters in install directory prevents Eclipse from starting                      | Eclipse will fail to launch if installed in a directory whose path contains certain invalid characters, including <code>:%#&lt;&gt;"!</code> . The workaround is to install Eclipse in a directory whose path does not contain invalid characters.  |
| Configuration can become invalid when removing <code>org.eclipse.update.configurator</code> | When launching an Eclipse Application from within the Eclipse IDE it is possible to select the set of plug-ins that are included in the Eclipse Application. Removing the <code>org.eclipse.update.configurator</code> plug-in from the set of plug-ins to an existing configuration can cause the configuration to become invalid. This can result in extra plug-ins installed in the target application that are not resolved. To work around this, after the <code>org.eclipse.update.configurator</code> plug-in has been removed, the target configuration area should be cleared before launching.  |
| Help browser tool bar buttons do not work for some documents                                | The Help browser's Print, Synchronize, and Bookmark buttons do not work for pages that are not actually installed with the product. However, you can always use the print command in the browser's context menu to print the page you're reading.   |
| Help documents not displayed in a browser or very slow document loading (Windows only)      | If your LAN settings are not properly configured for local host access, your Help browser might open to a blank page or display an HTTP error instead of a help page, or you may experience long delays when loading help documents. Your system administrator can configure your LAN settings so that help documents can be accessed from the local help server.<br><br><ol style="list-style-type: none"><li>1. In the Control Panel, open Internet Options, select the Connections tab and choose LAN Settings.</li><li>2. If your host was configured to use DHCP for IP assignment, make sure that the "Automatically detect settings" check box is cleared.</li></ol> |

3. If you use a proxy server, ensure that the "Bypass proxy server for local addresses" is selected.
4. In "Advanced" settings for proxies, add "**127.0.0.1;localhost**" to the "Exceptions" if these addresses are not listed.
5. If you are using an automatic configuration script for proxy settings, and are not sure that the script is correct, clear the "Use automatic configuration script" check box.

If the above steps do not fix your problem, try changing the port and host properties on the Help > Help Server preference page. In general, setting host to **localhost** or **127.0.0.1** should work. Also, especially when running a firewall, you may want to specify port 80 or some other firewall-friendly value.

Help browser displays a blank page

If you see a help launched with a blank page, and no errors displayed, it can be caused by a conflict between libraries in `org.eclipse.tomcat` plug-in and jars optionally installed in JRE `jre/lib/ext` directory. To fix the problem, ensure that the JRE used for running Eclipse does not contain any J2EE or Apache jars in the `jre/lib/ext` directory.

OLE document crashes can cause Eclipse to also crash (Windows only)

If an OLE document crashes, Eclipse can crash, or the workbench menus can become inconsistent.

Crash while editing text on Windows XP with SP2

Some users who have installed Service Pack 2 on Windows XP have experienced crashes while using editors in Eclipse. The workaround is to place a working version of `Windows\System32\USP10.DLL` in the Eclipse startup directory or uninstall Service Pack 2.

Eclipse does not start on Linux-Motif with Xinerama and a UTF-8 locale

The Linux-motif build of Eclipse does not launch properly when run on a computer with Xinerama (provides support for dual head monitors) and a UTF-8 locale. The workaround for this problem is to change the locale to a non-UTF-8 value, or to disable Xinerama.

Eclipse crashes on RedHat Linux 9 with Bluecurve (GTK+ only)

Users of the Bluecurve theme shipped with RedHat Linux 9 may experience problems running Eclipse. These problems may include crashes or reduced performance. We recommend changing to a different theme.

Eclipse hangs when pasting from an unresponsive application (GTK only)

If the application that is supplying the clipboard material is unresponsive, the paste operation hangs Eclipse for several minutes. This situation can be encountered when copying from an Eclipse target workbench, suspending the target workbench at a breakpoint and pasting into the hosting Eclipse workbench.

Available colors on 8-bit Linux (Linux only)

Typically, in Gnome Linux installs running with 8-bit visuals (i.e. 256 color mode), before the Eclipse application is started there are no free colors. This may mean that Eclipse is unable to allocate the default widget background color, causing it to display a white background. The functionality, however, is otherwise unaffected.

Key bindings can stop working on Debian (GTK+ only)

On some versions of Debian, Eclipse key bindings may stop working. In this context the only way to make the key bindings work again is to restart Eclipse.

The problem is that a focus issue exists in GTK+ 2.6.7 and earlier, for which SWT has a workaround. This workaround is incompatible with the GTK+ 2.6.7 fix, so a GTK+ version check is done at runtime to determine whether the workaround should be used or not. However, Debian backported the GTK+ focus fix into their libgtk+2.0 (2.6.4-2) package, so the SWT workaround and GTK+ fix are both incorrectly applied in this context.

To work around this problem, either get the Debian unstable version of GTK+, compile your own GTK+, or hack SWT's `Shell.gtk_realize(int)` and change the version that it checks.

Manually installing features and plug-ins on a FAT file system (Windows only)

When features and plug-ins are manually installed on top of an Eclipse-based product install located on a FAT file system that has already been run at least once, the product must be explicitly restarted with **-clean**. That is,

**eclipse.exe -clean**

Then, open the Help > Software Updates > Manage Configuration dialog and toggle on the "Show disabled features" button in its toolbar. Select the newly "installed" feature and press on the "Enable feature" action on the right pane (or select the action from the feature's context menu).

Allocating enough memory and solving OutOfMemoryErrors

By default, Eclipse will allocate up to 256 megabytes of Java heap memory. This should be ample for all typical development tasks. However, depending on the JRE that you are running, the number of additional plug-ins you are using, and the number of files you will be working with, you could conceivably have to increase this amount. Eclipse allows you to pass arguments directly to the Java VM using the **-vmargs** command line argument, which must follow all other Eclipse specific arguments. Thus, to increase the available heap memory, you would typically use:

**eclipse -vmargs -Xmx<memory size>**

with the **<memory size>** value set to greater than **"256M"** (256 megabytes -- the default).

When using a Sun VM, you may also need to increase the size of the permanent generation memory. The default maximum is 64 megabytes, but more may be needed depending on your plug-in configuration and use. The maximum permanent generation size is increased using the **-XX:MaxPermSize=<memory size>** argument:

**eclipse -vmargs -XX:MaxPermSize=<memory size>**

This argument may not be available for all VM versions and platforms; consult your VM documentation for more details.

Note that setting memory sizes to be larger than the amount of available physical memory on your machine will cause Java to "thrash" as it copies objects back and forth to virtual memory, which will severely degrade your performance.

# Chapter 3. Keys and Registration

Apollo for Eclipse licenses are based on a web services model where licenses are rented rather than purchased. Rather than purchase a license for a single user for indefinite use, the web services model 'rents' licenses either on a recurring subscription basis or for a single time period. The advantage is greater flexibility to deploy Apollo for Eclipse on an as-needed basis at a lower cost. Users who need the export options of Apollo for Eclipse on a regular basis will find the annual subscription to be the most practical solution. A contract programmer who will only be around for a short time can rent a license for a single one-month period.

Unlicensed copies of Apollo for Eclipse can be used as cost-free model 'readers' and can also be used to glean insight into code through the forward, reverse, and roundtrip engineering features. A license is required for export features like printing and saving.

## Types and Terminology

**Serial Number** - The Serial Number is a unique identifier that is used to generate the registration data to register the user with a specific copy of the software. The Serial Number must be registered to receive the License Key.

**License Key** - These keys are made available after the registration data has been received by Gentleware. Once a License Key is in place, the registration process is complete. These keys need no further attention, unless the copy is moved to another machine.

**One-Period Rental** - Licenses which have been rented for one period are valid until their expiration date. After the expiration date, export functions are no longer available in Apollo for Eclipse. These licenses are non-renewable; in order to use the export functions again, another license must be rented and the registration process repeated.

**Rent Subscription** - Licenses from a rent subscription are renewed automatically according to the terms of the rent subscription, e.g. for one year, one quarter, or one month. The renewals continue until the subscription is cancelled.

## License Manager



The license manager pictured here displays (in order of appearance): A serial number for a rent subscription, a valid license key for a rent subscription, a serial number for a one-period rental, and a valid license key for a one-period rental.

- **License Type** -This column indicates the license type, which could either be a Serial Number or a License Key.

A Serial Number is provided by Genteware and is used to generate the registration data necessary for the registration process in order to obtain a License Key. It is not an actual key to use the software, but can be used in the interim before the software must be registered.

A License Key is the final license generated during the registration process. Once a License Key is in place, the registration process is complete. These keys need no further attention, unless the copy is moved to another machine or is upgraded to another version.

- **Product** - The name of the product appears in this column.
- **Version** - If a license is restricted to a specific version, this information will appear in this column. If the license applies to any version of the listed product, it will display 'Any'.
- **Expiration Date** - License Keys rented for a single period (month, quarter, or year) have an expiration date, which is displayed in this column.

License Keys that are rented through the rent subscription service do not expire. The renewal date for the subscription is indicated in the column titled, 'Key Renewal Date'.

- **Key Renewal Date** - This column is only relevant for those customers who have taken out a Rent Subscription.

The license key of a subscription product has to be renewed regularly. This is done automatically every month, quarter or year, depending on the chosen payment cycle. A precondition for this automatic key renewal is an active internet connection, otherwise the renewal will have to be manually conducted the next time there is a working internet connection. Of course, renewal problems will also occur when payment has not been received for the next subscription period.

In the event of a problem with the renewal for whatever reason, you will still be able to start and work with the software five additional times.


- **Rent Subscription** - Users with either a fixed-period rental or a subscription rental will see either 'One Period' or 'Unlimited', depending on the rental type.

'Unlimited' indicates that this license is an Rent Subscription with periodical recurring charges. 'One Period' indicates that this license is rented for only one specific time period.

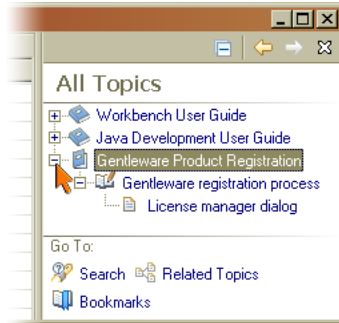
Users who have purchased a license can disregard this field.

- **Validity** - Validity refers to the status of the Serial Number or License Key. When the correct Serial Number or License Key is in place, the field will display 'Valid'. An incorrect or outdated key will display 'Invalid'.

## License Manager Help

Help files are available directly in the License Manager. To access these files, click on the question mark  button in the lower left corner of the License Manager. A Help partition will appear to the right.

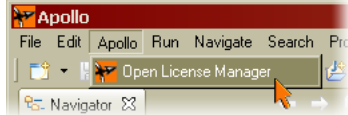
From the Help partition, click on 'All Topics' at the bottom of the page. Open the 'Genteware Product Registration' tree to view the available files.



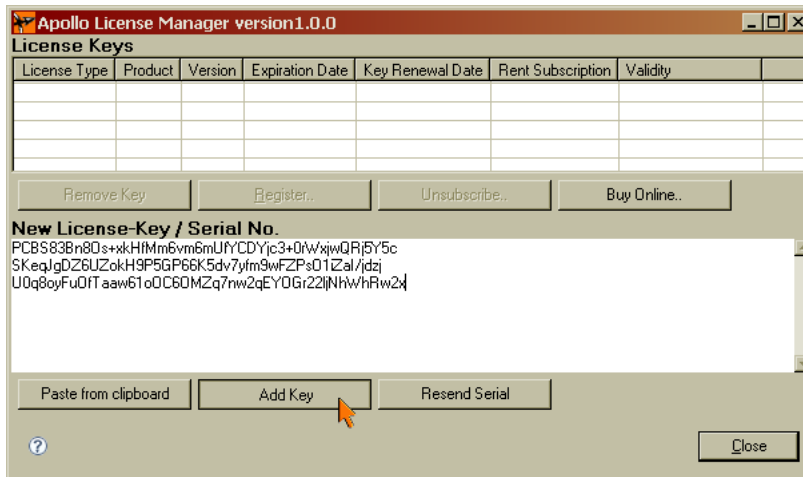
## Licensing Apollo for Eclipse

In order to activate the export features of Apollo for Eclipse, a license must be rented from the Gentleware web shop. After the rental order has been processed, an email with a serial number is sent to you.

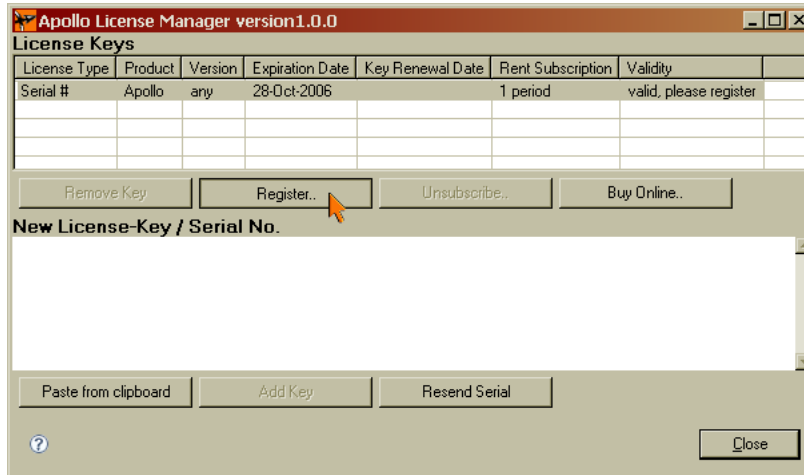
1. Open the license manager from the Apollo menu on the main toolbar.



2. Paste the serial number into the license manager and click 'Add Key'.



3. Click on the name of the serial number (it will appear highlighted when selected), then click 'Register'.



4. Enter your registration information. If you have an active internet connection, click 'Finish' and skip the rest of these instructions. You are now ready to work with Apollo for Eclipse.

If you are offline, click 'Next'.

Registration...

Enter and send your registration information.

Salutation: Mr.

First Name: Zippy

Last Name: Berwanger

E-Mail: zippy@berwanger.com

Subscribe to Gentleware announcements (approx. one mail per month)

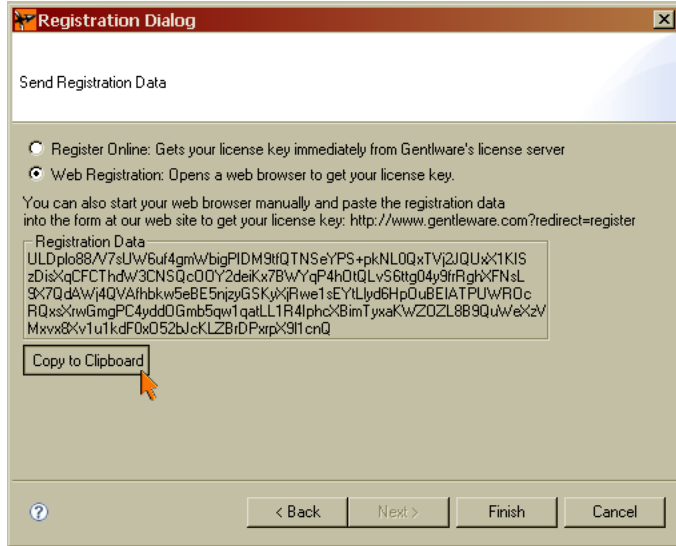
Preferred E-Mail format:  HTML  Plain

Company: Berwanger Enterprises

Country: Germany

< Back Next > Finish Cancel

5. Select 'Web Registration'. Copy the Registration Data to the clipboard, then click 'Finish'.

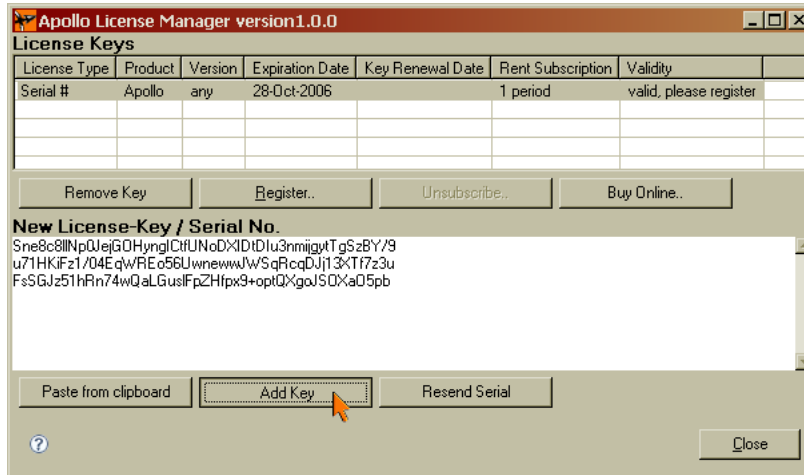


- Open a web browser on a computer that is online and point it to <http://www.gentleware.com/register.html>. Paste the Registration Data into the Registration page of the Gentleware website and click 'Get License Key'.

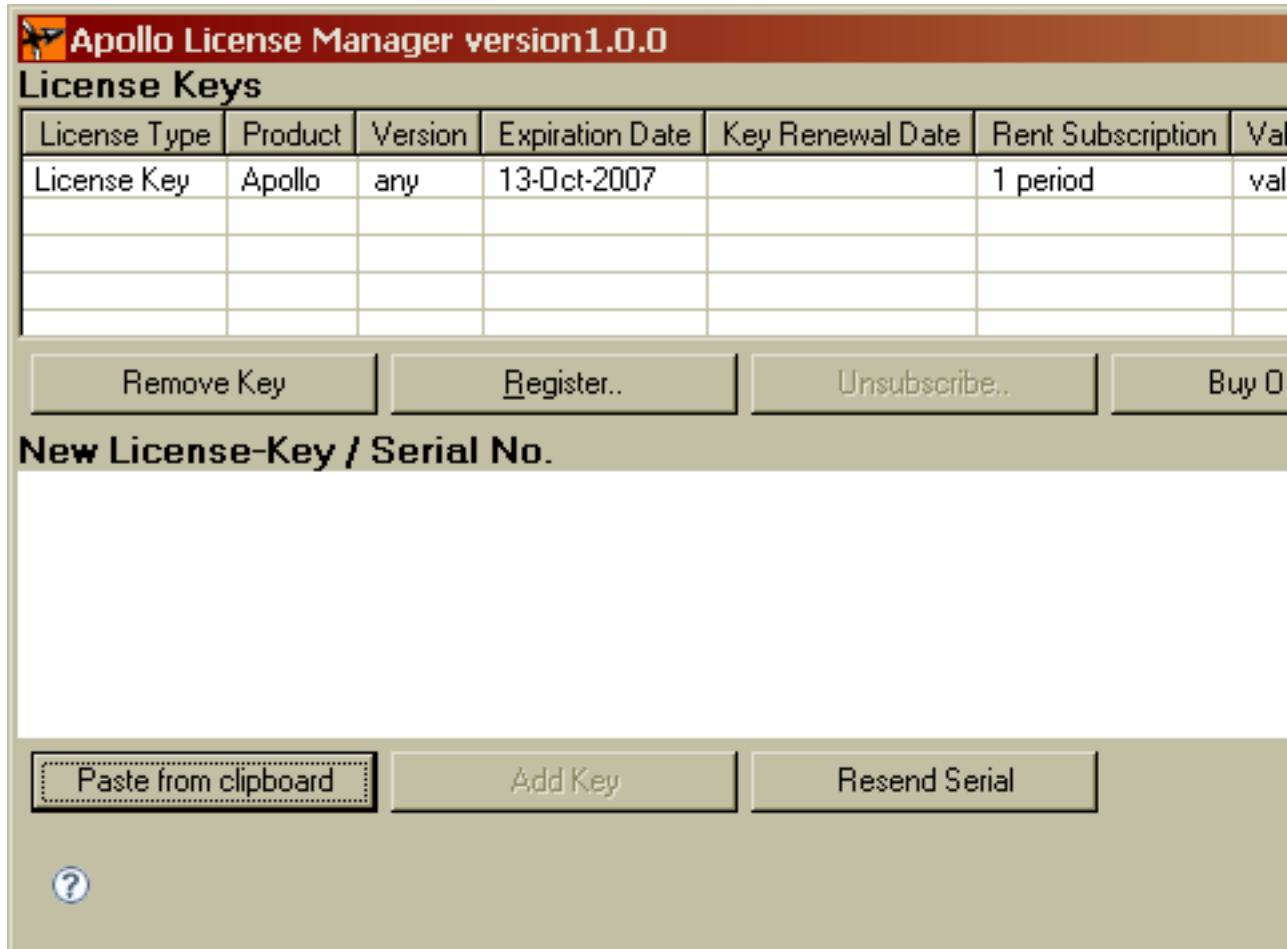


- Copy the resulting license key from the web site, paste it into the license manager, and click 'Add Key'.





After the key has been added, it will display as a valid key in the license manager. You are now ready to work with Apollo for Eclipse.



---

# Appendix A. Hypersonic SQL Group Database Engine License Agreement



[<http://hsqldb.org/>]

hsqldb - 100% Java Database

Lightweight 100% Java SQL Database Engine

## COPYRIGHTS AND LICENSES

ORIGINAL LICENSE (a.k.a. "hypersonic\_lic.txt")

For content, code, and products originally developed by Thomas Mueller and the Hypersonic SQL Group:

Copyright (c) 1995-2000 by the Hypersonic SQL Group. All rights reserved.

Redistribution and use in source and binary forms, with or without modification, are permitted provided that the following conditions are met:

Redistributions of source code must retain the above copyright notice, this list of conditions and the following disclaimer.

Redistributions in binary form must reproduce the above copyright notice, this list of conditions and the following disclaimer in the documentation and/or other materials provided with the distribution.

Neither the name of the Hypersonic SQL Group nor the names of its contributors may be used to endorse or promote products derived from this software without specific prior written permission.

THIS SOFTWARE IS PROVIDED BY THE COPYRIGHT HOLDERS AND CONTRIBUTORS "AS IS" AND ANY EXPRESS OR IMPLIED WARRANTIES, INCLUDING, BUT NOT LIMITED TO, THE IMPLIED WARRANTIES OF MERCHANTABILITY AND FITNESS FOR A PARTICULAR PURPOSE ARE DISCLAIMED. IN NO EVENT SHALL THE HYPERSONIC SQL GROUP, OR CONTRIBUTORS BE LIABLE FOR ANY DIRECT, INDIRECT, INCIDENTAL, SPECIAL, EXEMPLARY, OR CONSEQUENTIAL DAMAGES (INCLUDING, BUT NOT LIMITED TO, PROCUREMENT OF SUBSTITUTE GOODS OR SERVICES; LOSS OF USE, DATA, OR PROFITS; OR BUSINESS INTERRUPTION) HOWEVER CAUSED AND ON ANY THEORY OF LIABILITY, WHETHER IN CONTRACT, STRICT LIABILITY, OR TORT (INCLUDING NEGLIGENCE OR OTHERWISE) ARISING IN ANY WAY OUT OF THE USE OF THIS SOFTWARE, EVEN IF ADVISED OF THE POSSIBILITY OF SUCH DAMAGE.

This software consists of voluntary contributions made by many individuals on behalf of the Hypersonic SQL Group.

For work added by the HSQL Development Group (a.k.a. hsqldb\_lic.txt):

Copyright (c) 2001-2005, The HSQL Development Group All rights reserved.

Redistribution and use in source and binary forms, with or without modification, are permitted provided that the following conditions are met:

Redistributions of source code must retain the above copyright notice, this list of conditions and the following disclaimer.

Redistributions in binary form must reproduce the above copyright notice, this list of conditions and the following disclaimer in the documentation and/or other materials provided with the distribution.

Neither the name of the HSQL Development Group nor the names of its contributors may be used to endorse or promote products derived from this software without specific prior written permission.

THIS SOFTWARE IS PROVIDED BY THE COPYRIGHT HOLDERS AND CONTRIBUTORS "AS IS" AND ANY EXPRESS OR IMPLIED WARRANTIES, INCLUDING, BUT NOT LIMITED TO, THE IMPLIED WARRANTIES OF MERCHANTABILITY AND FITNESS FOR A PARTICULAR PURPOSE ARE DISCLAIMED. IN NO EVENT SHALL HSQL DEVELOPMENT GROUP, HSQLDB.ORG, OR CONTRIBUTORS BE LIABLE FOR ANY DIRECT, INDIRECT, INCIDENTAL, SPECIAL, EXEMPLARY, OR CONSEQUENTIAL DAMAGES (INCLUDING, BUT NOT LIMITED TO, PROCUREMENT OF SUBSTITUTE GOODS OR SERVICES; LOSS OF USE, DATA, OR PROFITS; OR BUSINESS INTERRUPTION) HOWEVER CAUSED AND ON ANY THEORY OF LIABILITY, WHETHER IN CONTRACT, STRICT LIABILITY, OR TORT (INCLUDING NEGLIGENCE OR OTHERWISE) ARISING IN ANY WAY OUT OF THE USE OF THIS SOFTWARE, EVEN IF ADVISED OF THE POSSIBILITY OF SUCH DAMAGE.