



poseidon for uml

enterprise edition

UML simplifies software development

The Unified Modeling Language was designed to reduce the complexity of software system design. Language and process specific notation has been replaced with a universal visual notation that facilitates communication within all levels of development – from business analysts with limited programming knowledge all the way to senior software architects.

Collaborate with ease with the Enterprise Edition

The Enterprise Edition is designed for use in highly collaborative development environments. Incorporating the features of the Professional Edition like UMLdoc, roundtrip-engineering, and sophisticated code generation, it allows physically disparate teams to work together, regardless of location.

Client-Server Architecture

The Enterprise Edition features a client-server architecture that enables collaborative modeling, i.e. the members of the development team can work on the same project concurrently. The project itself is managed and stored at the server, while modifications of the model by a client are deployed to all affected clients immediately. All clients are kept in sync with the server (and all other clients). Features like locking parts of the model for exclusive use and conflict checking are also included.

Features

- Fully implemented in Java, platform independent.
- Collaborative modeling environment.
- Exclusive locking of model parts and conflict checking.
- Secure file transmission between clients and server.
- Intuitive interface.
- Round-trip engineering for Java.
- Template-based code generation for:
C++, C#, CORBA IDL, Delphi, Perl, PHP4, SQL DDL, and VB.NET
- JAR and MDL import.
- Custom HTML documentation generation.

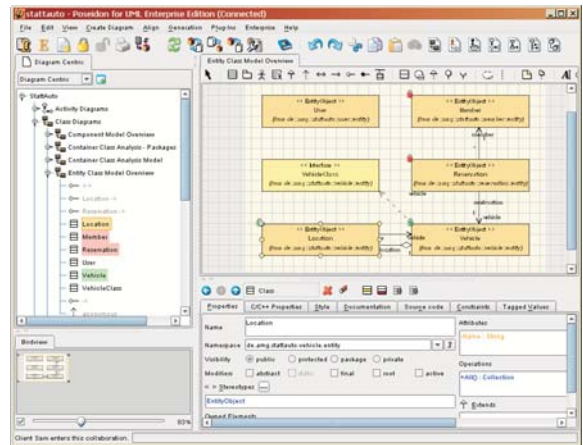
Teams of developers use real-time collaboration functions and versioning coupled with standalone Java roundtrip engineering to develop software across the room or across the globe.

Benefits

- **Solidify teamwork** with real-time collaboration tools.
- **Expand a small deployment** with ease.
- **Lower resistance** to new tools with the easy and intuitive interface.
- **Boost design excellence** with complete and accurate UML models.
- **Energize development efforts** with a rapid ramp-up period.
- **Amplify quality** while fostering a shorter time-to-market.
- **Constrain costs** and development hours.
- **Unite multiple disciplines** into a single team.

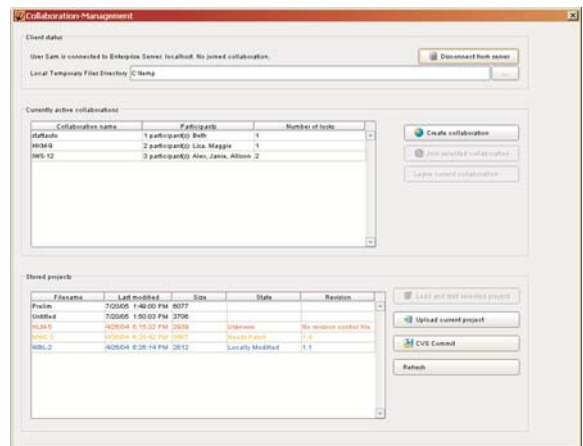
Collaborate with colleagues across the room or across the globe.

The Enterprise Edition offers efficient real-time collaboration to save developers time and administration efforts in multi-user projects.



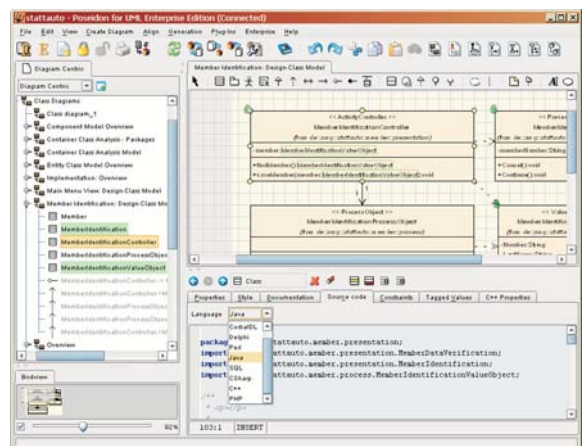
Safeguard changes and resolve conflicts.

Integrated support for the Concurrent Versioning System and elaborate conflict checking ensure accurate and up-to-date models for the entire team.



Fulfill your complete modeling needs.

The Enterprise Edition includes the superior features you have come to expect from Poseidon, including code generation for a variety of languages and roundtrip engineering for Java.



Gentleware AG

Ludwigstrasse 12
20357 Hamburg
Germany

Tel. +49 (0)40-2442 5330
Fax. +49 (0)40-2442 5331

info@gentleware.com
www.gentleware.com